



For four decades, IEM has remained at the forefront of supporting the nation's most significant emergency management, disaster recovery, homeland and national security threats, and public health crises. IEM delivers solutions for the most pressing challenges facing federal, state, local, and tribal agencies, and private sector partners.

Utilizing expertise and innovative strategies, IEM's Geospatial Technology Division – **IEM GEO** – develops critical visualization tools that drive decision making, transformation, accountability, and transparency.



IEM GEO is a **leader in the use of geographic information systems (GIS) for evidence-based decision-making**. As an **ESRI Silver Partner**, IEM GEO leverages cutting-edge Esri software models and simulations to develop **visualization and data analytics tools** that help decision-makers assess potential gaps and vulnerabilities.

Our GIS tools enable more **efficient** and **effective** resource management and damage assessment data following a disaster, leveraging web maps to determine community vulnerabilities to prioritize services for individuals and families requiring immediate assistance from public benefits programs (e.g., FEMA Individual Assistance, HUD CDBG-DR programs, U.S. Treasury's Homeowner Assistance Fund).

### Our Capabilities

IEM GEO maximizes geographic data and software tools to develop custom web maps and dashboards to support decision-makers and drive programmatic implementation. We offer solutions that provide multiple levels of data visibility, accessibility, and automation.

Our solutions seamlessly integrate with:

- ESRI Platforms:
  - ArcGIS Online
  - ArcGIS Pro
  - ArcMap
  - Dashboards
  - Field Maps
  - Survey123
  - Experience Builder
  - Web App Builder
- Other Solutions:
  - Advanced Excel Operations
  - FEMA Hazus-MH
  - Python, SQL, Arcade (Automation)
  - Smartsheet (WBS, Applications, and Surveys)
  - Appian Integration

### Office Locations

Research Triangle Park, NC (HQ) • Washington, D.C. • Baton Rouge, LA • Tallahassee, FL • Bel Air, MD • Guaynabo, PR • Aguadilla, PR

### Key Service Areas

IEM's dedicated Geospatial Division brings ample experience across multiple sectors offering complex Geospatial Solutions with expertise in the areas of:

- Census Data
- Critical Infrastructure (Broadband, Energy)
- Emergency Management
- Fraud Prevention
- Hazardous Materials
- Hazard Mitigation
- Homeowner Assistance Programs
- Human Resources
- Infrastructure
- Law Enforcement
- Supply Chain
- Planning
- Public Health
- Zoning and Land Use

### Contact Us

[solutions@iem.com](mailto:solutions@iem.com)

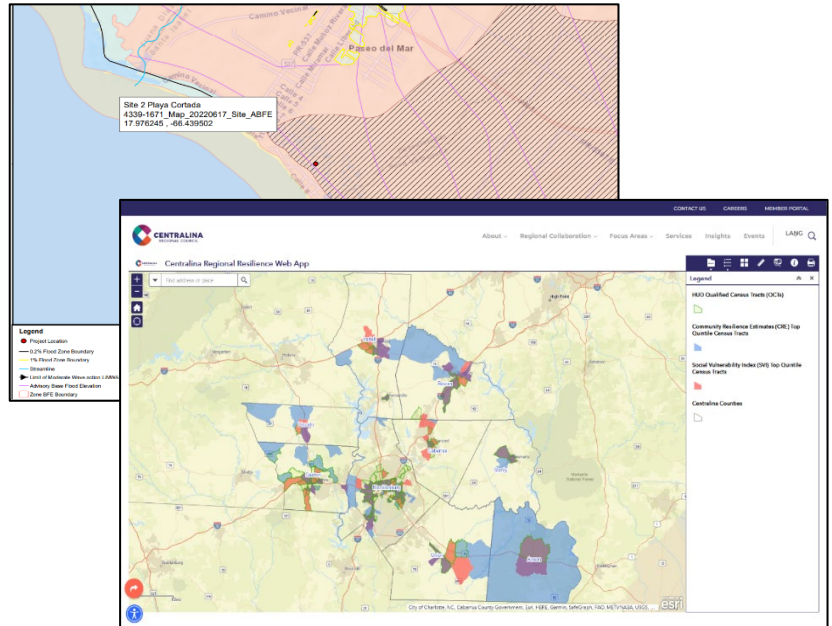
## ITEM GEO Delivers

ITEM GEO solutions help decision-makers visualize the types of incidents that threaten communities and their critical infrastructure and assets by providing rapid and expert analysis of complex data to gain situational awareness of a project, incident, or crisis. Our team uses a wide range of publicly available and commercial data including census, critical infrastructure, supply-chain logistics, national flood hazard layers, and other critical data sets.

## Sample Uses

### Puerto Rico Hazard Mitigation Grant Program (HMGP) Web Map

- Initialized unprecedented, on-the ground cooperation and information/data sharing across numerous government agencies and other partners
- Provided 38 critical layers to facilitate access of the crucial data needed to produce over 230 Benefit-Cost Analyses (BCAs) for mitigation



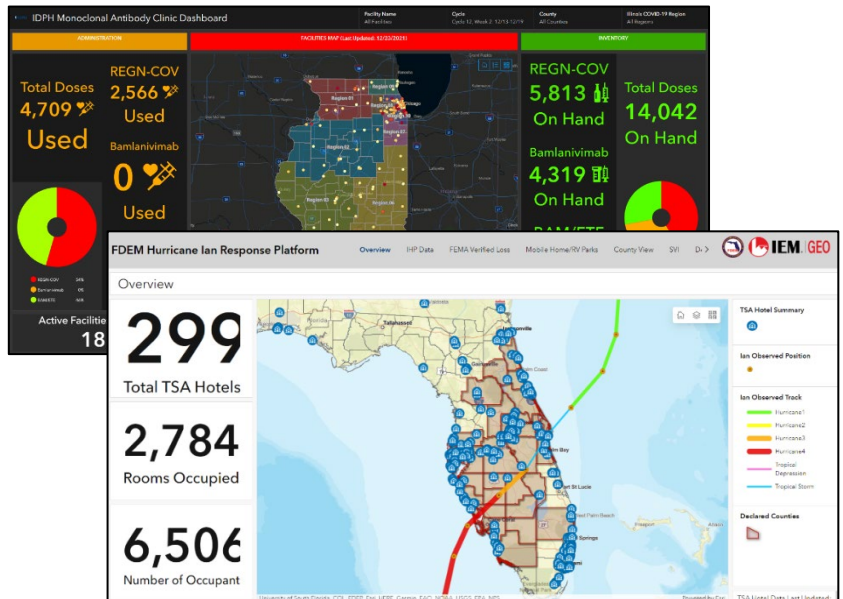
Puerto Rico HMGP Web Map; Centralina Regional Resilience Mapping Tool

### Centralina Regional Resilience Web Application

- Seamlessly integrates across multiple platforms
- Built to support pre-disaster and post-disaster planning through curated data layers that allow users to visualize regional infrastructure and vulnerabilities
- Tool is [publicly accessible](#) and available upon request to the Centralina Regional Council (NC)

## Emerging Public Health Issues & COVID-19 Dashboards

- Designed daily automated maintenance reports for clinics across six states
- Interactive dashboards provided real-time data insights to help states monitor progress and redirect pandemic resources as needed



Emerging Health & COVID-19 Dashboard; FDEM Hurricane Ian Response Dashboard

### FDEM Hurricane Ian Response Platform Dashboard

- Developed in the immediate aftermath of Hurricane Ian making landfall in Florida
- Provided state leaders with direct access to Application Programming Interface (API) data sources from the Federal Emergency Management Agency (FEMA)
- Daily and weekly automated maintenance to support Florida Division of Emergency Management (FDEM) operations